

APS Policy

6/30/14

8.1

File: IBA

current policy

### ELEMENTARY CLASS SIZE

The School Committee has a commitment to provide the highest quality education for our children. The Committee recognizes that appropriate class sizes are a necessary part of the growth and development of the individual student. Therefore, the size of elementary classes, particularly in grades Kindergarten - 3, should be 22 or lower wherever possible, with classes larger than 25 viewed as undesirable in any grade. Attainment of the desirable maximum number of pupils per teacher shall, however, be dependent on the practicalities with which the Committee must deal.

The Superintendent of Schools is delegated the responsibility to develop and promulgate the administrative procedures required to implement this policy.

# APS Procedure

6/30/14

File: IIBA-R

*Current procedure*

## ELEMENTARY CLASS SIZE

There will be an effort to maintain classes within the maximum ranges stated in the policy for grades K-3 (22) and 4-6 (25) through not assigning transfer or new students to schools where the average per class is at or above the maximum class sizes. If the average minimum number in a grade level is exceeded per grade for the number of classes assigned to that school (22 K-3, 25 4-6) the Superintendent shall report this and make his/her recommendation to the School Committee.

Class enrollments will be shared monthly with the Administrative Council, and if any member of the Council has a concern about enrollments at the time or a concern about projected enrollments, the issue of a recommended course of action will be put on the agenda for discussion. If there appears to be a change in enrollment which will affect staffing or the number of sections assigned to a school, a meeting will be held with the elementary principals to discuss the situation and recommend a course of action to the Superintendent which is educationally desirable and administratively feasible.

# BPS Policy

6/30/14

File: IIBA

## ELEMENTARY CLASS SIZE

The School Committee has a commitment to provide the highest quality education for our children. The Committee recognizes that desirable class sizes are a necessary part of the growth and development of the individual student. Therefore, the desirable number of students per class should be as follows, whenever possible:

Grades K-1: 20 students

Grades 2, 3, & 4: 22 students

Grades 5 & 6: 24 students

Attainment of the desirable maximum number of pupils per teacher shall, however, be dependent on the practicalities with which the Committee must deal.

The Superintendent/Curriculum Director is delegated the responsibility to develop and promulgate the administrative procedures required to implement this policy.



Approved by the Boxborough School Committee: 4/12/11

**ELEMENTARY CLASS SIZE**  
**Draft**  
**Recommended policy for the newly expanded region**

The School Committee has a commitment to provide the highest quality education for our children. The Committee recognizes that desirable class sizes are a necessary part of the growth and development of the individual student. Therefore, the desirable number of students per class should be as follows, whenever possible:

Kindergarten: 20 Students  
Grades 1-3: 22 Students  
Grades 4-6: 24 Students

Attainment of the desirable maximum number of pupils in each class shall, however, be dependent on the practicalities with which the Committee must deal.

The Superintendent of Schools or designee shall oversee the implementation of this policy.



# Staff Children  
Case [ ]  
CAD, DAD, DBD, GAD, TAD, and MAD  
- ALL DAY PROGRAMS

Actual  
Boxborough Public Schools  
2013 - 2014  
June 1, 2014

7/15/2014  
12:47 PM

Grade YOG	Blanchard				Total	Total BPS	Choice Munc Agrmt	#Sec.	Avg. Size	Total APS	Staff/Munc Agrmt	#Sec.	Avg. Size	APS & BPS Combined	Total Choice/Staff	#Sec.	Avg. Size
Rm		276	218														
<b>K-26</b>		<b>19</b>	<b>20</b>	<b>39</b>	<b>39</b>	4	2	19.5	<b>287</b>	7	14	20.5	<b>326</b>	11	16	20.4	
Rm	211	213	215														
<b>Gr. 1-25</b>		<b>18</b>	<b>16</b>	<b>17</b>	<b>51</b>	8	3	17.0	<b>311</b>	6	14	22.2	<b>359</b>	14	17	21.1	
Rm	219	221	227														
<b>Gr. 2-24</b>		<b>20</b>	<b>20</b>	<b>20</b>	<b>60</b>	7	3	20.0	<b>321</b>	6	15	21.4	<b>382</b>	13	18	21.2	
Rm	226	229	231														
<b>Gr. 3-23</b>		<b>19</b>	<b>20</b>	<b>20</b>	<b>59</b>	4	3	19.7	<b>373</b>	9	16	23.3	<b>433</b>	13	19	22.8	
Rm	243	245	247														
<b>Gr. 4-22</b>		<b>19</b>	<b>19</b>	<b>19</b>	<b>57</b>	0	3	19.0	<b>380</b>	7	16	23.8	<b>439</b>	7	19	23.1	
Rm	118	128	130														
<b>Gr. 5-21</b>		<b>24</b>	<b>24</b>	<b>23</b>	<b>71</b>	2	3	23.7	<b>364</b>	2	15	24.3	<b>428</b>	4	18	23.8	
Rm	108	110	112	114													
<b>Gr. 6-20</b>	<b>17</b>	<b>18</b>	<b>18</b>	<b>18</b>	<b>71</b>	5	4	17.8	<b>359</b>	2	15	23.9	<b>431</b>	7	19	22.7	
				3#													
<b>Total</b>	21 Sec	Average	19.4	<b>408</b>	<b>408</b>	30	21	19.4	<b>2395</b>	39	105	22.8	<b>2798</b>	69	126	22.2	
Range	16	24					16	24	Range	20	25				0	30	

Grade level totals correct  
Distribution by Room not complete

## Acton Class Sizes

June 2014

2013-2014				2014-2015		
	Total Enrolled Oct 1	Sections	Class Size	Total Adjusted Projection	Sections	Class Size
K	287	14	20.5	278	14	19.9
1	311	14	22.2	307	14	21.9
2	321	15	21.4	321	14	22.9
3	373	16	23.3	336	15	22.4
4	380	16	23.75	378	16	23.6
5	364	15	24.3	388	16	24.3
6	359	15	24.0	362	15	24.1
	2395	105	22.8	2359	104	22.8

## Boxborough Class Sizes

June 2014

2013-2014				2014-2015		
	Total Enrolled Oct 1	Sections	Class Size	Total Adjusted Projection	Sections	Class Size
K	39	2	19.5	40	2	20
1	51	3	17.0	44	2	22
2	60	3	20.0	54	3	18
3	59	3	19.7	62	3	20.7
4	57	3	19.0	59	3	19.7
5	71	3	23.7	60	3	20.0
6	71	4	17.8	71	3	23.7
	408	21	19.4	390	19	20.5

## Combined Acton and Boxborough Class Sizes

	2013-2014			2014-2015		
	Total Enrolled Oct 1	Sections	Class Size	Total Projected Oct 1	Sections	Class Size
K	326	16	20.4	318	16	19.9
1	362	17	21.3	348	16	21.8
2	382	18	21.2	375	17	22.1
3	432	19	22.8	398	18	22.1
4	437	19	23	437	19	23.0
5	435	18	24.1	448	19	23.6
6	430	19	22.6	433	18	24.1
	2804	126	22.3	2747	123	22.4



Acton Elementary Enrollment and Class Size  
History and Projections FY '09 - FY '20

2014-2015							2015-2016							2016-2017						
	Oct 1 Proj	Staff	Total Enrolled Oct 1	Sections	Class Size	Year to Year Chnge		Oct 1 Proj	Staff	Total Enrolled Oct 1	Sections	Class Size	Year to Year Chnge		Oct 1 Proj	Staff	Total Enrolled Oct 1	Sections	Class Size	Year to Year Chnge
K	269	7	276	14	19.7	-12	K	268	6	274	14	19.6	-2	K	238	6	244	13	18.8	-30
1	302	7	309	14	22.1	1	1	290	6	296	14	21.1	-13	1	288	6	294	14	21.0	-2
2	313	6	319	14	22.8	-3	2	313	7	320	14	22.9	1	2	300	6	306	14	21.9	-14
3	329	8	337	15	22.5	-37	3	325	6	331	14	23.6	-6	3	326	7	333	14	23.8	2
4	370	8	378	16	23.6	-4	4	334	8	342	15	22.8	-36	4	330	6	336	14	24.0	-6
5	378	8	386	16	24.1	29	5	373	8	381	16	23.8	-5	5	336	8	344	15	22.9	-37
6	360	2	362	15	24.1	2	6	383	8	391	16	24.4	29	6	378	8	386	16	24.1	-5
	2321	46	2367	104	22.8	-24		2286	49	2335	103	22.7	-32		2196	47	2243	100	22.4	-92

## Acton Elementary Enrollment and Class Size History and Projections FY '09 - FY '20

2017-2018							2018-2019							2019-2020						
	Oct 1 Proj	Staff	Total Enrolled Oct 1	Sections	Class Size	Year to Year Chnge		Oct 1 Proj	Staff	Total Enrolled Oct 1	Sections	Class Size	Year to Year Chnge		Oct 1 Proj	Staff	Total Enrolled Oct 1	Sections	Class Size	Year to Year Chnge
K	230	6	236	12	19.7	-8	K	244	6	250	14	17.9	14	K	257	6	263	14	18.8	13
1	256	6	262	13	20.2	-32	1	248	6	249	12	20.8	-13	1	262	6	268	14	19.1	19
2	298	6	304	14	21.7	-2	2	265	6	271	13	20.8	-33	2	256	6	262	12	21.8	-9
3	312	6	318	14	22.7	-15	3	310	6	316	14	22.6	-2	3	276	6	282	13	21.7	-34
4	330	7	337	14	24.1	1	4	316	6	322	14	23.0	-15	4	315	6	321	14	22.9	-1
5	333	6	339	14	24.2	-5	5	333	7	340	14	24.3	1	5	319	6	325	14	23.2	-15
6	341	8	349	15	23.3	-37	6	337	6	343	14	24.5	-6	6	337	7	344	14	24.6	1
	2100	45	2145	96	22.3	-98		2053	43	2091	95	22.0	-54		2022	43	2065	95	21.7	-26

# Boxborough

## 5-YEAR STUDENT ENROLLMENT PROJECTIONS - 1/31/14

	2011-2012 (as of 6-1-12)		Current School Yr. 2012-2013		2013-2014		2014-2015		2015-2016		2016-2017		2017-2018		2018-2019	
	# Students	# Classes	# Students	# Classes	# Students	# Classes	# Students	# Classes	# Students	# Classes	# Students	# Classes	# Students	# Classes	# Students	# Classes
ECP	22	2	21	2	23	2 @ 11-12	23 (est.)	2 @ 11-12	23 (est.)	2 @ 11-12	23 (est.)	2 @ 11-12	23 (est.)	2 @ 11-12	23 (est.)	2 @ 11-12
K	58 (9C)	3 @ 19-20	44 (0C)	2 @ 22	40 (3C)	2 @ 20	40 (est)	2 @ 20	X	2 @ 19	X	2 @ 15-16	X	2 @ 16-17	X	2 @ 11-12
	59		56		35		39		38		31		33		45	
	42 (Cen)		36 (Cen)		25 (Cen)		29 (Cen)		X (Cen)		X (Cen)		X (Cen)		X (Cen)	
1	53 (4C)	3 @ 17-18	59 (7C)	3 @ 19-20	51 (7C)	3 @ 17	40 (3C)	2 @ 20	40 (est)	2 @ 20	X	2 @ 20	X	2 @ 16-17	X	2 @ 17-18
	53		64		43		37		41		40		33		35	
	43 (Cen)		41 (Cen)		36 (Cen)		29 (Cen)		29 (Cen)		27 (Cen)		X (Cen)		(Cen)	
2	53 (1C)	3 @ 17-18	54 (3C)	3 @ 18	61 (6C)	3 @ 20-21	51 (7C)	3 @ 17	40 (3C)	2 @ 20	40 (est)	2 @ 20	X	2 @ 21	X	2 @ 17
	54		57		53		45		38		43		42		34	
	47 (Cen)		44 (Cen)		41 (Cen)		38 (Cen)		29 (Cen)		29 (Cen)		27 (Cen)		X (Cen)	
3	66 (2C)	3 @ 22	54 (0C)	3 @ 18	59 (4C)	3 @ 19-20	61 (6C)	3 @ 20-21	51 (7C)	3 @ 17	40 (3C)	2 @ 20	40 (est)	2 @ 20	X	2 @ 21
	68		53		55		53		45		38		43		42	
	45 (Cen)		44 (Cen)		44 (Cen)		32 (Cen)		38 (Cen)		29 (Cen)		29 (Cen)		27 (Cen)	
4	66 (6C)	4 @ 16-17	65 (2C)	3 @ 21-22	59 (0C)	3 @ 19-20	59 (4C)	3 @ 19-20	61 (6C)	3 @ 20-21	51 (7C)	3 @ 17	40 (3C)	2 @ 20	40 (est)	2 @ 20
	66		70		57		56		54		46		39		44	
	55 (Cen)		45 (Cen)		44 (Cen)		44 (Cen)		32 (Cen)		38 (Cen)		29 (Cen)		29 (Cen)	
5	76 (3C)	3 @ 25	69 (5C)	4 @ 17-18	73 (2C)	3 @ 24-25	59 (0C)	3 @ 19-20	59 (4C)	3 @ 19-20	61 (6C)	3 @ 20-21	51 (7C)	3 @ 17	40 (3C)	2 @ 20-21
	75		69		69		60		59		57		48		41	
	63 (Cen)		56 (Cen)		45 (Cen)		46 (Cen)		44 (Cen)		32 (Cen)		38 (Cen)		29 (Cen)	
6	83 (7C)	4 @ 20-21	75 (3C)	4 @ 18-19	70 (5C)	4 @ 17-18	73 (2C)	3 @ 24-25	59 (0C)	3 @ 19-20	59 (4C)	3 @ 19-20	61 (6C)	3 @ 20-21	51 (7C)	3 @ 17
	84		75		64		69		60		59		57		48	
	65 (Cen)		62 (Cen)		56 (Cen)		52 (Cen)		46 (Cen)		44 (Cen)		32 (Cen)		38 (Cen)	
Choice	32		20		27		22		20		20		16		10	
Total Classes (does not inc. ECP)		23		22		21		19		18		17		16		15-16
Total Students (incl. ECP)	477		441		436		405 (est)		372 (est)		337 (est)		326 (est)		314 (est)	
Note: Class size Guidelines: K-1=20; 2-4=22; 5-6=24																
Blue #'s - based on Peter Ashton's Enrollent Projections: 11-13 report																
Red #'s - based on Real Numbers: 1-1-14 Enrollment Report																
Yellow Highlight - based on 2013 Census																
(#C) - Choice Students																



ABRHS Class Count Summary  
January 2014

kpk/clv  
5:50 PM  
7/17/2014

		2010 - 2011 Actual			2011-2012 Actual			2012-2013 Actual			2013-2014 Actual				2013-2014 January				
		N = 1994			N = 1956			N = 1980			N=1960				N=1962				
Course #	yr/sem	Course	Sect.	Total #	Ave.	Sect.	Total #	Ave.	Sect.	Total #	Ave.	Sect.	Total #	Ave.	range	Sect.	Total #	Ave.	range
111		English I -H	3	80	26.67	3	69	23.00	4	85	21.25	4	87	21.75	19-25	4	86	21.50	19-25
112		English I	19	391	20.58	19	369	19.42	19	369	19.42	16	341	21.31	18-28	16	338	21.13	18-26
151		English I SP (Trans)	1	16	16.00	1	9	9.00	1	14	14.00	1	14	14.00	NA	1	14	14.00	NA
115		English (Ind)	1	17	17.00	1	12	12.00	1	15	15.00	1	15	15.00	NA	1	15	15.00	NA
		<b>Total English I</b>	<b>24</b>	<b>504</b>	<b>21.00</b>	<b>24</b>	<b>459</b>	<b>19.13</b>	<b>25</b>	<b>483</b>	<b>19.32</b>	<b>22</b>	<b>457</b>	<b>20.77</b>		<b>22</b>	<b>453</b>	<b>20.59</b>	
201		American Studies	5	115	23.00	4	99	24.75	2	41	20.50	3	70	23.33	19-29	3	69	23.00	18-29
121		English II - H	4	95	23.75	4	93	23.25	4	89	22.25	5	129	25.80	20-29	5	130	26.00	20-29
122		English II - A/E	9	186	20.67	9	194	21.56	10	219	21.90	8	172	21.50	20-24	8	170	21.25	20-23
123		English II - CP	4	74	18.50	5	111	22.20	6	105	17.50	4	93	23.25	20-25	4	91	22.75	20-25
126		English II (Ind)	1	15	15.00	1	17	17.00	1	10	10.00	1	11	11.00	NA	1	10	10.00	NA
		<b>Total English II</b>	<b>23</b>	<b>485</b>	<b>21.09</b>	<b>23</b>	<b>514</b>	<b>22.35</b>	<b>23</b>	<b>464</b>	<b>20.17</b>	<b>21</b>	<b>475</b>	<b>22.62</b>		<b>21</b>	<b>470</b>	<b>22.38</b>	
131		English III - H	4	108	27.00	4	83	20.75	5	116	23.20	4	107	26.75	22-31	4	104	26.00	22-28
132		English III - AE	11	261	23.73	12	298	24.83	13	280	21.54	11	254	23.09	20-27	11	262	23.82	18-28
133		English III - CP	4	81	20.25	4	86	21.50	5	103	20.60	5	97	19.40	14-24	5	100	20.00	14-25
134		English III - SP	1	10	10.00	1	12	12.00	1	12	12.00	1	10	10.00	NA	1	11	11.00	NA
		<b>Total English III</b>	<b>20</b>	<b>460</b>	<b>23.00</b>	<b>21</b>	<b>479</b>	<b>22.81</b>	<b>24</b>	<b>511</b>	<b>21.29</b>	<b>21</b>	<b>468</b>	<b>22.29</b>		<b>21</b>	<b>477</b>	<b>22.71</b>	
141		English IV - H	3	69	23.00	3	58	19.33	2	41	20.50	3	59	19.67	17-25	3	56	18.67	17-21
		English IV - AE	11	249	22.64	8	214	26.75	0	0	0.00	0	0	0.00		0	0	0.00	
146		English IV - Project	4	96	24.00	5	95	19.00	3	54	18.00	4	84	21.00	19-22	4	85	21.25	20-23
		English IV - CP	3	75	25.00	4	78	19.50	0	0	0.00	0	0	0.00		0	0	0.00	
154-159	sem	Senior Sem Electives	0	0	0.00	0	0	0.00	18.5	363.5	19.65	15	344.5	22.97	19-27	15	344	22.93	17-27
144		English IV - SP	1	7	7.00	1	8	8.00	1	13	13.00	1	18	18.00	NA	1	17	17.00	NA
		<b>Total English IV</b>	<b>22</b>	<b>496</b>	<b>22.55</b>	<b>21</b>	<b>453</b>	<b>21.57</b>	<b>24.5</b>	<b>471.5</b>	<b>19.24</b>	<b>23</b>	<b>505.5</b>	<b>21.98</b>		<b>23</b>	<b>502</b>	<b>21.83</b>	
486;490		MAP I & II	2	11	5.50	2	14	7.00	2	10	5.00	2	7	3.50	3-4	2	10	5.00	5
895	sem	Pub. Speak. Deb.	1	16	16.00	1	11	11.00	1	16	16.00	0.5	8.5	17.00	NA	0.5	8	16.00	NA
149;150	sem	Creative Writing I & II	1	29	29.00	1	20	20.00	1	18.5	18.50	0	0	0.00		0	0	0.00	
		Writing Workshop	0	0	0.00	0	0	0.00	0	0	0.00	0	0	0.00		0	0	0.00	
		<b>Total</b>	<b>4</b>	<b>56</b>	<b>14.00</b>	<b>4</b>	<b>45</b>	<b>11.25</b>	<b>4</b>	<b>44.5</b>	<b>11.13</b>	<b>2.5</b>	<b>15.5</b>	<b>6.20</b>		<b>2.5</b>	<b>18</b>	<b>7.20</b>	
		<b>Grand Total English</b>	<b>93</b>	<b>2001</b>	<b>21.52</b>	<b>93</b>	<b>1950</b>	<b>20.97</b>	<b>101</b>	<b>1974</b>	<b>19.64</b>	<b>89.5</b>	<b>1921</b>	<b>21.46</b>		<b>89.5</b>	<b>1920</b>	<b>21.45</b>	

ABRHS Class Count Summary  
January 2014

kpk/clv  
5:50 PM  
7/17/2014

		2010 - 2011 Actual			2011-2012 Actual			2012-2013 Actual			2013-2014 Actual				2013-2014 January			
		N = 1994			N = 1956			N = 1980			N=1960				N=1962			
Enrollment		Sect.	Total #	Ave.	Sect.	Total #	Ave.	Sect.	Total #	Ave.	Sect.	Total #	Ave.	range	Sect.	Total #	Ave.	range
Course		Sect.	Total #	Ave.	Sect.	Total #	Ave.	Sect.	Total #	Ave.	Sect.	Total #	Ave.	range	Sect.	Total #	Ave.	range
211	W. History - H	2	61	30.50	3	52	17.33	3	63	21.00	2	49	24.50	21-28	2	41	20.50	17-24
212	W. History - AE	14	326	23.29	13	315	24.23	13	312	24.00	15	298	19.87	14-25	15	301	20.07	13-28
213	W. History - CP	6	101	16.83	5	84	16.80	5	99	19.80	5	100	20.00	15-25	5	100	20.00	13-26
285	W. History SP	1	16	16.00	1	9	9.00	1	14	14.00	1	14	14.00	NA	1	14	14.00	NA
	<b>W. History Total</b>	<b>23</b>	<b>504</b>	<b>21.91</b>	<b>22</b>	<b>460</b>	<b>20.91</b>	<b>22</b>	<b>488</b>	<b>22.18</b>	<b>23</b>	<b>461</b>	<b>20.04</b>		<b>23</b>	<b>456</b>	<b>19.83</b>	
202	American Studies	5	115	23.00	4	99	24.75	2	41	20.50	3	70	23.33	19-29	3	69	23.00	18-29
221	USH/GOV I -H	4	83	20.75	4	96	24.00	3	73	24.33	4	90	22.50	21-24	4	85	21.25	18-23
222	USH/GOV I -AE	9	206	22.89	9	214	23.78	11	275	25.00	9	230	25.56	23-28	9	235	26.11	20-29
223	USH/GOV I - CP	3	74	24.67	4	85	21.25	4	67	16.75	4	85	21.25	20-23	4	82	20.50	19-23
286	USH/GOV I - SP	0	0	0.00	1	21	21.00	1	13	13.00	1	12	12.00	NA	1	12	12.00	NA
	<b>Total USH/GOV I</b>	<b>21</b>	<b>478</b>	<b>22.76</b>	<b>22</b>	<b>515</b>	<b>23.41</b>	<b>21</b>	<b>469</b>	<b>22.33</b>	<b>21</b>	<b>487</b>	<b>23.19</b>		<b>21</b>	<b>483</b>	<b>23.00</b>	
231	USH/GOV II -H	4	101	25.25	5	111	22.20	5	111	22.20	4	104	26.00	23-29	4	98	24.50	22-28
232	USH/GOV II -AE	12	278	23.17	12	286	23.83	12	288	24.00	12	276	23.00	19-28	12	284	23.67	20-30
233	USH/GOV II -CP	4	81	20.25	4	79	19.75	5	104	20.80	4	85	21.25	18-27	4	84	21.00	17-26
	<b>Total USH/GOV II</b>	<b>20</b>	<b>460</b>	<b>23.00</b>	<b>21</b>	<b>476</b>	<b>22.67</b>	<b>22</b>	<b>503</b>	<b>22.86</b>	<b>20</b>	<b>465</b>	<b>23.25</b>		<b>20</b>	<b>466</b>	<b>23.30</b>	
251	Psych - H	3	163	54.33	3	161	53.67	3	158	52.67	3	167	55.67	55-56	3	167	55.67	55-56
252	Psych -AE	7	153	21.86	5	129	25.80	6	138	23.00	7	158	22.57	18-27	7	155	22.14	16-28
253	Psych - CP	2	42	21.00	3	50	16.67	2	42	21.00	3	53	17.67	16-20	3	49	16.33	16-17
	<b>Total Psych</b>	<b>12</b>	<b>358</b>	<b>29.83</b>	<b>11</b>	<b>340</b>	<b>30.91</b>	<b>11</b>	<b>338</b>	<b>30.73</b>	<b>13</b>	<b>378</b>	<b>29.08</b>		<b>13</b>	<b>371</b>	<b>28.54</b>	
276	sem Sociology	3	63.5	21.17	3	52	17.33	4	68	17.00	2	48.5	24.25	21-28	2	50	25.00	22-28
262	sem Facing History	0	0	0.00	1.5	22.5	15.00	1	16.5	16.50	0.5	12	24.00	NA	0.5	12	24.00	NA
282	sem You and the Law	1.5	29	19.33	1.5	34.5	23.00	2	42	21.00	1	24.5	24.50	24-25	1	26.5	26.50	25-28
284	European Hist-H/AP	2	55	27.50	3	56	18.67	2	48	24.00	2	57	28.50	24-33	2	57	28.50	24-33
236	Economics	2	46	23.00	3	70	23.33	4	82	20.50	5	113	22.60	20-28	5	109	21.80	18-27
241	International Relations	2	51	25.50	2	60	30.00	3	88	29.33	3	67	22.33	20-26	3	66	22.00	19-26
272	sem Political Science	1	26	26.00	1	16	16.00	1.5	29	19.33	1	14.5	14.50	14-15	1	13.5	13.50	13-14
274	sem Current Events	1	17	17.0	1	23.5	23.5	2.5	53	21.2	1.5	29.5	19.67	15-22	1.5	28.5	19.00	15-21
94;489;491;482	MAP I & II, WH	2	11	5.50	2	10	5.00	2	7	3.50	2	5	2.50	2-3	2	5	2.50	2-3
	<b>Misc. SS Totals</b>	<b>14.5</b>	<b>298.5</b>	<b>20.59</b>	<b>18</b>	<b>344.5</b>	<b>19.14</b>	<b>22</b>	<b>433.5</b>	<b>19.70</b>	<b>18</b>	<b>371</b>	<b>20.61</b>		<b>18</b>	<b>367.5</b>	<b>20.42</b>	
	<b>Grand Total Soc. St.</b>	<b>90.5</b>	<b>2098.5</b>	<b>23.19</b>	<b>94</b>	<b>2136</b>	<b>22.72</b>	<b>98</b>	<b>2232</b>	<b>22.77</b>	<b>95</b>	<b>2162</b>	<b>22.76</b>		<b>95</b>	<b>2144</b>	<b>22.56</b>	

ABRHS Class Count Summary  
January 2014

kpk/clv  
5:50 PM  
7/17/2014

		2010 - 2011 Actual			2011-2012 Actual			2012-2013 Actual			2013-2014 Actual				2013-2014 January			
		N = 1994			N = 1956			N = 1980			N=1960				N=1962			
Enrollment		Sect.	Total #	Ave.	Sect.	Total #	Ave.	Sect.	Total #	Ave.	Sect.	Total #	Ave.	range	Sect.	Total #	Ave.	range
Course		Sect.	Total #	Ave.	Sect.	Total #	Ave.	Sect.	Total #	Ave.	Sect.	Total #	Ave.	range	Sect.	Total #	Ave.	range
316		2	31	15.50	2	34	17.00	2	19	9.50	2	24	12.00	11-13	2	28	14.00	12-16
360		1	16	16.00	1	7	7.00	1	13	13.00	1	10	10.00	NA	1	10	10.00	NA
326		2	45	22.50	2	50	25.00	3	59	19.67	2	48	24.00	22-26	2	47	23.50	22-25
310		1	31	31.00	2	45	22.50	2	34	17.00	2	41	20.50	19-22	2	39	19.50	19-20
312		7	163	23.29	7	152	21.71	7	147	21.00	7	164	23.43	18-28	7	139	19.86	13-24
313		5	101	20.20	6	129	21.50	6	124	20.67	5	114	22.80	18-26	5	135	27.00	24-29
924		1	11	11.00	1	7	7.00	1	6	6.00	1	11	11.00	NA	1	9	9.00	NA
<b>Total Algebra</b>		<b>19</b>	<b>398</b>	<b>20.95</b>	<b>21</b>	<b>424</b>	<b>20.19</b>	<b>22</b>	<b>402</b>	<b>18.27</b>	<b>20</b>	<b>412</b>	<b>20.60</b>		<b>20</b>	<b>407</b>	<b>20.35</b>	
324		1	10	10.00	1	17	17.00	1	29	29.00	1	23	23.00	NA	1	27	27.00	NA
311		3	96	32.00	3	87	29.00	3	95	31.67	3	88	29.33	25-32	3	71	23.67	18-28
322		10	264	26.40	8	206	25.75	9	223	24.78	8	177	22.13	17-27	8	171	21.38	14-27
323		6	126	21.00	7	124	17.71	7	156	22.29	8	157	19.63	15-23	8	173	21.63	18-24
<b>Total Geometry</b>		<b>20</b>	<b>496</b>	<b>24.80</b>	<b>19</b>	<b>434</b>	<b>22.84</b>	<b>20</b>	<b>503</b>	<b>25.15</b>	<b>20</b>	<b>445</b>	<b>22.25</b>		<b>20</b>	<b>442</b>	<b>22.10</b>	
321		3	92	30.67	3	94	31.33	3	94	31.33	3	96	32.00	31-33	3	86	28.67	25-32
332		8	184	23.00	9	223	24.78	7	191	27.29	8	197	24.63	22-30	8	203	25.38	20-30
		8	163	20.38	8	164	20.50	0	0	0.00	0	0	0.00		0	0	0.00	
333;334		0	0	0.00	0	0	0.00	8	158	19.75	9	198	22.00	16-27	9	196	21.78	15-27
<b>Total Algebra II</b>		<b>19</b>	<b>439</b>	<b>23.11</b>	<b>20</b>	<b>481</b>	<b>24.05</b>	<b>18</b>	<b>443</b>	<b>24.61</b>	<b>20</b>	<b>491</b>	<b>24.55</b>		<b>20</b>	<b>485</b>	<b>24.25</b>	
331		2	72	36.00	2	66	33.00	2	68	34.00	2	66	33.00	32-34	2	65	32.50	32-33
352		8	197	24.63	7	167	23.86	7	186	26.57	7	178	25.43	22-28	7	165	23.57	19-27
353		8	168	21.00	7	153	21.86	7	173	24.71	8	173	21.63	19-24	8	185	23.13	19-28
<b>Total Trigonometry</b>		<b>18</b>	<b>437</b>	<b>24.28</b>	<b>16</b>	<b>386</b>	<b>24.13</b>	<b>16</b>	<b>427</b>	<b>26.69</b>	<b>17</b>	<b>417</b>	<b>24.53</b>		<b>17</b>	<b>415</b>	<b>24.41</b>	
343		0	0	0.00	1	19	19.00	1	15	15.00	1	19	19.00	NA	1	22	22.00	NA
341		1	37	37.00	1	39	39.00	1	37	37.00	1	41	41.00	NA	1	38	38.00	NA
342		4	101	25.25	4	95	23.75	4	98	24.50	4	111	27.75	26-30	4	110	27.50	25-30
<b>Total Calculus</b>		<b>5</b>	<b>138</b>	<b>27.60</b>	<b>6</b>	<b>153</b>	<b>25.50</b>	<b>6</b>	<b>150</b>	<b>25.00</b>	<b>6</b>	<b>171</b>	<b>28.50</b>		<b>6</b>	<b>170</b>	<b>28.33</b>	
357	sem	0.5	15	30.00	1	16	16.00	1	23	23.00	1.5	32	21.33	19-24	1.5	25.5	17.00	15-21
483;488		2	9	4.50	2	8	4.00	2	9	4.50	2	2	1.00	1	2	5	2.50	2-3
		0	0	0.00	0	0	0.00	0	0	0.00	0	0	0.00		0	0	0.00	
346	sem	1	28	28.00	1	35	35.00	1.5	43	28.67	1.5	44.5	29.67	26-35	1.5	41	27.33	24-30
623		2	53	26.50	2	39	19.50	2	35	17.50	1	27	27.00	NA	1	24	24.00	NA
347	sem	1	24.5	24.50	1	32.5	32.50	1.5	39.5	26.33	1.5	42	28.00	18-35	1.5	39.5	26.33	17-31
358	sem	0.5	12.5	25.00	1	25.5	25.50	1	26	26.00	1.5	38	25.33	23-28	1.5	31.5	21.00	18-25
<b>Misc. Math Totals</b>		<b>7</b>	<b>142</b>	<b>20.29</b>	<b>8</b>	<b>156</b>	<b>19.50</b>	<b>9</b>	<b>175.5</b>	<b>19.50</b>	<b>9</b>	<b>185.5</b>	<b>20.61</b>		<b>9</b>	<b>166.5</b>	<b>18.50</b>	
<b>Grand Total Math</b>		<b>88</b>	<b>2050</b>	<b>23.30</b>	<b>90</b>	<b>2034</b>	<b>22.60</b>	<b>91</b>	<b>2101</b>	<b>23.08</b>	<b>92</b>	<b>2122</b>	<b>23.06</b>		<b>92</b>	<b>2086</b>	<b>22.67</b>	

**ABRHS Class Count Summary  
January 2014**

kpk/clv  
5:50 PM  
7/17/2014

		2010 - 2011 Actual			2011-2012 Actual			2012-2013 Actual			2013-2014 Actual				2013-2014 January			
Enrollment		N = 1994			N = 1956			N = 1980			N=1960				N=1962			
Course		Sect.	Total #	Ave.	Sect.	Total #	Ave.	Sect.	Total #	Ave.	Sect.	Total #	Ave.	range	Sect.	Total #	Ave.	range
411	Earth Science - H	5	112	22.40	4	89	22.25	5	123	24.60	4	87	21.75	20-24	4	87	21.75	21-22
412	Earth Science - AE	8	174	21.75	8	195	24.38	6	148	24.67	7	180	25.71	22-27	7	173	24.71	21-32
413	Earth Science - CP	4	83	20.75	5	75	15.00	5	85	17.00	5	84	16.80	13-19	5	88	17.60	14-21
485	Earth Science SP	1	16	16.00	1	9	9.00	1	14	14.00	1	14	14.00	NA	1	14	14.00	NA
	<b>Total Earth Science</b>	<b>18</b>	<b>385</b>	<b>21.39</b>	<b>18</b>	<b>368</b>	<b>20.44</b>	<b>17</b>	<b>370</b>	<b>21.76</b>	<b>17</b>	<b>365</b>	<b>21.47</b>		<b>17</b>	<b>362</b>	<b>21.29</b>	
421	Biology - H	7	208	29.71	7	173	24.71	6	185	30.83	6	182	30.33	27-33	6	180	30.00	28-32
422	Biology - AE	9	193	21.44	8	188	23.50	8	181	22.63	6	160	26.67	24-28	6	163	27.17	26-28
423	Biology - CP	5	79	15.80	5	90	18.00	5	102	20.40	5	90	18.00	16-21	5	83	16.60	13-21
460	Biology - SP	2	31	15.50	3	39	13.00	2	16	8.00	2	30	15.00	11-19	2	35	17.50	16-19
	<b>Total Biology</b>	<b>23</b>	<b>511</b>	<b>22.22</b>	<b>23</b>	<b>490</b>	<b>21.30</b>	<b>21</b>	<b>484</b>	<b>23.05</b>	<b>19</b>	<b>462</b>	<b>24.32</b>		<b>19</b>	<b>461</b>	<b>24.26</b>	
431	Chemistry-H	5	130	26.00	6	157	26.17	5	133	26.60	4	115	28.75	27-31	4	105	26.25	20-30
432	Chemistry-AE	8	184	23.00	8	204	25.50	9	191	21.22	8	170	21.25	13-27	8	161	20.13	15-26
433	Chemistry-CP	6	119	19.83	6	120	20.00	7	126	18.00	9	175	19.44	16-24	9	186	20.67	13-30
	<b>Total Chemistry</b>	<b>19</b>	<b>433</b>	<b>22.79</b>	<b>20</b>	<b>481</b>	<b>24.05</b>	<b>21</b>	<b>450</b>	<b>21.43</b>	<b>21</b>	<b>460</b>	<b>21.90</b>		<b>21</b>	<b>452</b>	<b>21.52</b>	
441	Physics - H	3	80	26.67	3	92	30.67	3	88	29.33	4	101	25.25	21-31	4	83	20.75	14-26
442	Physics - AE	6	144	24.00	7	147	21.00	6	141	23.50	7	169	24.14	21-28	7	180	25.71	20-30
443	Physics - CP	6	121	20.17	6	112	18.67	7	149	21.29	7	150	21.43	19-23	7	152	21.71	18-26
	<b>Total Physics</b>	<b>15</b>	<b>345</b>	<b>23.00</b>	<b>16</b>	<b>351</b>	<b>21.94</b>	<b>16</b>	<b>378</b>	<b>23.63</b>	<b>18</b>	<b>420</b>	<b>23.33</b>		<b>18</b>	<b>415</b>	<b>23.06</b>	
467;468;469	Fundamentals	1	10	10.00	1	5	5.00	1	8	8.00	2	17	8.50	3-14	2	16	8.00	4-12
459	Env. Sci.-H/AP	2	52	26.00	2	49	24.50	3	69	23.00	2	52	26.00	25-27	2	52	26.00	26
439	Adv. Chem. - H	3	61	20.33	3	54	18.00	3	66	22.00	3	56	18.67	18-20	3	56	18.67	18-19
451	Adv. Bio - H	3	89	29.67	4	89	22.25	4	98	24.50	4	95	23.75	20-27	4	94	23.50	21-27
452	Sci Tech	0	0	0.00	1	19	19.00	0	0	0.00	2	26	13.00	12-14	2	29	14.50	13-16
462	sem Human Body SP	0.5	7.5	15.00	0	0	0.00	1	16	0.00	0	0	0.00		0	0	0.00	
453	sem Bioethics	0.5	15	30.00	0	0	0.00	0.5	7	0.00	1	23.5	23.50	19-28	1	23.5	23.50	19-28
436	sem Anat/Phys	2	43	21.50	1.5	35.5	23.67	1.5	37	24.67	1.5	39	26.00	23-30	1.5	40.5	27.00	23-30
463	Physical Science	1	22	22.00	1	19	19.00	2	38	19.00	1	29	29.00	NA	1	29	29.00	NA
458	Environ Sci. (on-line)	1	17	0.00	1	23	0.00	0	0	0.00	0	0	0.00		0	0	0.00	
461	sem Sci. & Environment	0.5	8	16.00	0	0	0.00	1	16.5	0.00	0	0	0.00		0	0	0.00	
466	sem Oceanography	3	75.5	25.17	1.5	39	26.00	1	18.5	18.50	1.5	37	24.67	24-26	1.5	37.5	25.00	21-28
465	sem Engineering	1	23	23.00	0	0	0.00	0	0	0.00	0	0	0.00		0	0	0.00	
454	sem Bioethics on-line	0.5	6.5	13.00	0	0	0.00	0	0	0.00	0	0	0.00		0	0	0.00	
487;493	MAP I & II	1	9	9.00	2	13	6.50	2	6	3.00	1	4	4.00	NA	1	4	4.00	NA
	<b>Misc. Science Totals</b>	<b>20</b>	<b>438.5</b>	<b>21.93</b>	<b>18</b>	<b>345.5</b>	<b>19.19</b>	<b>20</b>	<b>380</b>	<b>19.00</b>	<b>19</b>	<b>378.5</b>	<b>19.92</b>		<b>19</b>	<b>381.5</b>	<b>20.08</b>	
	<b>Grand Total Science</b>	<b>95</b>	<b>2112.5</b>	<b>22.24</b>	<b>95</b>	<b>2036</b>	<b>21.43</b>	<b>95</b>	<b>2062</b>	<b>21.71</b>	<b>94</b>	<b>2086</b>	<b>22.19</b>		<b>94</b>	<b>2072</b>	<b>22.04</b>	



ABRHS Class Count Summary  
January 2014

kpk/clv  
5:50 PM  
7/17/2014

		2010 - 2011 Actual			2011-2012 Actual			2012-2013 Actual			2013-2014 Actual				2013-2014 January			
		N = 1994			N = 1956			N = 1980			N=1960				N=1962			
Course #	Enrollment Course	Sect.	Total #	Ave.	Sect.	Total #	Ave.	Sect.	Total #	Ave.	Sect.	Total #	Ave.	range	Sect.	Total #	Ave.	range
510	French I	1	18	18.00	1	16	16.00	1	19	19.00	1	21	21.00	NA	1	20	20.00	NA
511	French II - H	1	29	29.00	2	48	24.00	1	37	37.00	2	35	17.50	16-19	2	35	17.50	16-19
512	French II - AE	0	0	0.00	0	0	0.00	2	45	22.50	2	52	26.00	25-27	2	49	24.50	22-27
	French II - AE/CP	2	47	23.50	3	60	20.00	0	0	0.00	0	0	0.00		0	0	0.00	
513	French II - CP	1	18	18.00	0	0	0.00	2	27	13.50	1	19	19.00	NA	1	20	20.00	NA
	<b>Total French I&amp;II</b>	<b>5</b>	<b>112</b>	<b>22.40</b>	<b>6</b>	<b>124</b>	<b>20.67</b>	<b>6</b>	<b>128</b>	<b>21.33</b>	<b>6</b>	<b>127</b>	<b>21.17</b>		<b>6</b>	<b>124</b>	<b>20.67</b>	
521	French III -H	2	48	24.00	1	28	28.00	2	50	25.00	2	37	18.50	15-22	2	36	18.00	14-22
	French III - AE/IV-CP	0	0	0.00	0	0	0.00	0	0	0.00	0	0	0.00		0	0	0.00	
522	French III - AE	2	43	21.50	2	44	22.00	2	42	21.00	2	39	19.50	19-20	2	39	19.50	19-20
523	French III - CP	1	20	20.00	1	17	17.00	0	0	0.00	1	24	24.00	NA	1	24	24.00	NA
523;533	French III-CP/IV-CP	0	0	0.00	0	0	0.00	2	20	10.00	0	0	0.00		0	0	0.00	
	<b>Total French III</b>	<b>5</b>	<b>111</b>	<b>22.20</b>	<b>4</b>	<b>89</b>	<b>22.25</b>	<b>6</b>	<b>112</b>	<b>18.67</b>	<b>5</b>	<b>100</b>	<b>20.00</b>		<b>5</b>	<b>99</b>	<b>19.80</b>	
533	French IV-CP	1	13	13.00	1	14	14.00	0	0	0.00	1	10	10.00	NA	1	10	10.00	NA
531;542	French IV - H/V AE	2	57	28.50	2	48	24.00	1	26	26.00	2	47	23.50	21-26	2	46	23.00	20-26
532;543	French IV - AE/V-CP	2	24	12.00	2	34	17.00	2	37	18.50	2	36	18.00	18	2	36	18.00	18
	<b>Total French IV</b>	<b>5</b>	<b>94</b>	<b>18.80</b>	<b>5</b>	<b>96</b>	<b>19.20</b>	<b>3</b>	<b>63</b>	<b>21.00</b>	<b>5</b>	<b>93</b>	<b>18.60</b>		<b>5</b>	<b>92</b>	<b>18.40</b>	
541	French V - H /AP	1	21	21.00	1	22	22.00	1	32	32.00	1	19	19.00	NA	1	19	19.00	NA
542	French V - AE	1	18	18.00	1	14	14.00	1	11	11.00	0	0	0.00		0	0	0.00	
	<b>Total French V</b>	<b>2</b>	<b>39</b>	<b>19.50</b>	<b>2</b>	<b>36</b>	<b>18.00</b>	<b>2</b>	<b>43</b>	<b>21.50</b>	<b>1</b>	<b>19</b>	<b>19.00</b>		<b>1</b>	<b>19</b>	<b>19.00</b>	
	<b>Grand Total French</b>	<b>17</b>	<b>356</b>	<b>20.94</b>	<b>17</b>	<b>345</b>	<b>20.29</b>	<b>17</b>	<b>346</b>	<b>20.35</b>	<b>17</b>	<b>339</b>	<b>19.94</b>		<b>17</b>	<b>334</b>	<b>19.65</b>	
554	Spanish I Part 1	2	44	22.00	2	46	23.00	3	49	16.33	2	25	12.50	11-14	2	24	12.00	11-13
555	Spanish I Part 2	2	45	22.50	2	38	19.00	3	41	13.67	3	46	15.33	12-17	3	45	15.00	12-17
552	Spanish I - AE	1	22	22.00	1	21	21.00	1	25	25.00	1	21	21.00	NA	1	20	20.00	NA
	Spanish I - CP	0	0	0.00	0	0	0.00	0	0	0.00	0	0	0.00		0	0	0.00	
	<b>Total Spanish I</b>	<b>5</b>	<b>111</b>	<b>22.20</b>	<b>5</b>	<b>105</b>	<b>21.00</b>	<b>7</b>	<b>115</b>	<b>16.43</b>	<b>6</b>	<b>92</b>	<b>15.33</b>		<b>6</b>	<b>89</b>	<b>14.83</b>	
563	Spanish II-CP	5	89	17.80	4	89	22.25	5	89	17.80	4	94	23.50	21-26	4	97	24.25	21-27
561	Spanish II -H	4	113	28.25	4	90	22.50	3	82	27.33	4	94	23.50	22-26	4	96	24.00	22-25
562	Spanish II - AE	8	159	19.88	7	144	20.57	6	139	23.17	6	123	20.50	13-25	6	127	21.17	13-28
	<b>Total Spanish II</b>	<b>17</b>	<b>361</b>	<b>21.24</b>	<b>15</b>	<b>323</b>	<b>21.53</b>	<b>14</b>	<b>310</b>	<b>22.14</b>	<b>14</b>	<b>311</b>	<b>22.21</b>		<b>14</b>	<b>320</b>	<b>22.86</b>	
573	Spanish III - CP	3	50	16.67	4	87	21.75	5	90	18.00	4	83	20.75	19-25	4	81	20.25	18-23
572	Spanish III- AE	0	0	0.00	0	0	0.00	6	133	22.17	6	124	20.67	17-24	6	122	20.33	17-25
571	Spanish III - H	3	80	26.67	3	83	27.67	2	67	33.50	3	66	22.00	19-24	3	65	21.67	19-24
	Spanish III AE / IV CP	7	155	22.14	6	144	24.00	0	0	0.00	0	0	0.00		0	0	0.00	
	Spanish III CP / IVCPc	0	0	0.00	0	0	0.00	0	0	0.00	0	0	0.00		0	0	0.00	
	<b>Total Spanish III</b>	<b>13</b>	<b>285</b>	<b>21.92</b>	<b>13</b>	<b>314</b>	<b>24.15</b>	<b>13</b>	<b>290</b>	<b>22.31</b>	<b>13</b>	<b>273</b>	<b>21.00</b>		<b>13</b>	<b>268</b>	<b>20.62</b>	

ABRHS Class Count Summary  
January 2014

kpk/clv  
5:50 PM  
7/17/2014

		2010 - 2011			2011-2012			2012-2013			2013-2014				2013-2014			
		Actual			Actual			Actual			Actual				January			
		N = 1994			N = 1956			N = 1980			N=1960				N=1962			
Course #	Enrollment	Sect.	Total #	Ave.	Sect.	Total #	Ave.	Sect.	Total #	Ave.	Sect.	Total #	Ave.	range	Sect.	Total #	Ave.	range
581	Spanish IV - H	2	61	30.50	3	73	24.33	3	69	23.00	3	60	20.00	16-21	3	58	19.33	14-23
	Spanish IV - AE	4	106	26.50	5	110	22.00	0	0	0.00	0	0	0.00		0	0	0.00	
583	Spanish IV - CP	3	44	14.67	3	38	12.67	4	72	18.00	3	54	18.00	12-23	3	51	17.00	8-23
582;593	Spanish IV-AE/CP	0	0	0.00	0	0	0.00	4	104	26.00	4	98	24.50	20-27	4	94	23.50	20-26
	<b>Total Spanish IV</b>	<b>9</b>	<b>211</b>	<b>23.44</b>	<b>11</b>	<b>221</b>	<b>20.09</b>	<b>11</b>	<b>245</b>	<b>22.27</b>	<b>10</b>	<b>212</b>	<b>21.20</b>		<b>10</b>	<b>203</b>	<b>20.30</b>	
591	Spanish V - H/AP	2	31	15.50	1	28	28.00	1	30	30.00	2	25	12.50	12-13	2	23	11.50	11-12
592	Spanish V - AE	2	38	19.00	2	28	14.00	1	32	32.00	2	38	19.00	18-20	2	38	19.00	17-21
	Sp. V CP	0	0	0.00	1	5	5.00	0	0	0.00	0	0	0.00		0	0	0.00	
	<b>Total Spanish V</b>	<b>4</b>	<b>69</b>	<b>17.25</b>	<b>4</b>	<b>61</b>	<b>15.25</b>	<b>2</b>	<b>62</b>	<b>31.00</b>	<b>4</b>	<b>63</b>	<b>15.75</b>		<b>4</b>	<b>61</b>	<b>15.25</b>	
	<b>Grand Total Spanish</b>	<b>48</b>	<b>1037</b>	<b>21.60</b>	<b>48</b>	<b>1024</b>	<b>21.33</b>	<b>47</b>	<b>1022</b>	<b>21.74</b>	<b>47</b>	<b>951</b>	<b>20.23</b>		<b>47</b>	<b>941</b>	<b>20.02</b>	
500	Latin I	2	47	23.50	3	50	16.67	2	47	23.50	1	31	31.00	NA	1	27	27.00	NA
506	Latin I H	0	0	0.00	0	0	0.00	1	21	21.00	1	21	21.00	NA	1	20	20.00	NA
	Latin I AE	0	0	0.00	0	0	0.00	0	0	0.00	0	0	0.00		0	0	0.00	
520	Latin II	0	0	0.00	0	0	0.00	0	0	0.00	1	27	27.00	NA	1	25	25.00	NA
502	Latin II AE	0	0	0.00	0	0	0.00	0	0	0.00	0	0	0.00		0	0	0.00	
501;502	Latin II AE/H	1	29	29.00	1	24	24.00	1	20	20.00	1	15	15.00	NA	1	12	12.00	NA
0	Latin III AE	0	0	0.00	0	0	0.00	0	0	0.00	0	0	0.00		0	0	0.00	
508;503	Latin III AE/H	1	14	14.00	1	16	16.00	1	16	16.00	0	0	0.00		0	0	0.00	
525	Latin IV Vergil AE/H	0	0	0.00	0	0	0.00	0	0	0.00	0	0	0.00		0	0	0.00	
03;508;524;525	Latin III/IV AE/H	0	0	0.00	0	0	0.00	0	0	0.00	1	12	12.00	NA	1	12	12.00	NA
527	Italian I	2	38	19.00	2	50	25.00	0	0	0.00	0	0	0.00		0	0	0.00	
	Italian I /Italian I H	0	0	0.00	0	0	0.00	0	0	0.00	0	0	0.00		0	0	0.00	
	Italian I H	0	0	0.00	0	0	0.00	0	0	0.00	0	0	0.00		0	0	0.00	
	Italian II AE	0	0	0.00	0	0	0.00	0	0	0.00	0	0	0.00		0	0	0.00	
528;529	Italian II AE/H	2	32	16.00	1	25	25.00	1	23	23.00	0	0	0.00		0	0	0.00	
0	Italian III AE	0	0	0.00	0	0	0.00	0	0	0.00	0	0	0.00		0	0	0.00	
0	Italian III AE/H	1	17	17.00	1	16	16.00	0	0	0.00	0	0	0.00		0	0	0.00	
534;535;536	Italian III/IV AE/H	0	0	0.00	0	0	0.00	1	10	10.00	1	16	16.00	NA	1	15	15.00	NA
546	Chinese I	1	19	19.00	1	16	16.00	1	27	27.00	1	15	15.00	NA	1	15	15.00	NA
547	Chinese II AE	1	16	16.00	1	18	18.00	1	17	17.00	1	24	24.00	NA	1	24	24.00	NA
548;549	Chinese III AE/H	1	16	16.00	1	15	15.00	1	14	14.00	1	17	17.00	NA	1	17	17.00	NA
557	Chinese IV H	0	0	0.00	0	0	0.00	0	0	0.00	1	11	11.00	NA	1	10	10.00	NA
	<b>Total Other WL</b>	<b>12</b>	<b>228</b>	<b>19.00</b>	<b>12</b>	<b>230</b>	<b>19.17</b>	<b>10</b>	<b>195</b>	<b>19.50</b>	<b>10</b>	<b>189</b>	<b>18.90</b>		<b>10</b>	<b>177</b>	<b>17.70</b>	
	<b>Grand Total W. Lang.</b>	<b>77</b>	<b>1621</b>	<b>21.05</b>	<b>77</b>	<b>1599</b>	<b>20.77</b>	<b>74</b>	<b>1563</b>	<b>21.12</b>	<b>74</b>	<b>1479</b>	<b>19.99</b>		<b>74</b>	<b>1452</b>	<b>19.62</b>	

**RJ GREY ACTUAL AND PROJECTED ENROLLMENTS**

School Year	7th	8th	Choice 7th	Choice 8th	Original Project Total	Actual
2008-2009*	501	500	2			1003
2009-2010*	470	502	7			979
2010-2011*	464	476	9			949
2011-2012*	462	479	7	5		953
2012-2013*	449	468	11	7		935
2013-2014*	461	454	8	11		934
2014-2015	425	467	7	8	907	
2015-2016	430	431	4	7	872	
2016-2017	443	436	8	4	891	
2017-2018	442	450	11	8	911	
2018-2019	406	448	15	11	880	

**Notes:** Enrollment numbers in italics are projections based on Ashton report and District enrollment figures for choice students

Choice numbers by grade for 2008-2010 were not immediately available, so a total figure was inserted

The "original project total" indicates the projected class sizes - sum of projected 7 and 8 plus projected choice; the "Actual" column indicates actual enrollment based on Oct 1 data for that school year

	Projections for Full Team and Class Size					
	Grade 7 With 4 Teams		Grade 7 With 4 1/2 Teams#		Grade 8	
	Team Size	Class Size	Team Size	Class Size	Team Size	Class Size
2008-2009*	126	25	115	23	126	25
2009-2010*	121	24	110	22	129	26
2010-2011*	121	24	109	22	124	25
2011-2012*	117	23	106	21	121	24
2012-2013*	115	23			119	24
2013-2014*	<b>117</b>	<b>23</b>			<b>116</b>	<b>23</b>
2014-2015	108	22			119	24
2015-2016	109	22			110	22
2016-2017	113	23			110	22
2017-2018	113	23			115	23
2018-2019	105	21			115	23

**Notes:** RJG had a "1/2 team" from 2008 thru 2012; the middle column indicates the actual average team sizes for those years. The left column indicates what average team sizes would have been during those four years if there were only 4 teams in 7th grade (figures shaded in grey); Beginning in 2012-2013, with 4 teams in 7th grade, the left column now indicates actual team size average (for 12-13 & 13-14) and projected team sizes for future years. The size of the 1/2 team was approximately 45 students.

Grade 8 only requires one column to indicate trends in team sizes as there has been no shift in the number of 8th grade teams

Numbers in italics indicate again projections based on District enrollment figures

Exploratory Projected Class Sizes			
	7th Sizes with 4 Exploratories	8th Sizes with 5 Exploratories	8th Sizes with 4 Exploratories
2008-2009*	29	25	32
2009-2010*	28	26	32
2010-2011*	27	25	31
2011-2012*	27	24	30
2012-2013*	29	24	30
2013-2014*	<b>29</b>	24	<b>29</b>
2014-2015	27	23.4	30
2015-2016	27	22	27
2016-2017	28	22	28
2017-2018	28	23	29
2018-2019	26	22.4	29

This chart illustrates actual and projected class sizes for JH exploratory classes (Music, Minuteman Tech, Art, etc.); Through 2012-2013, there were 5 exploratory programs in 8th grade and 4 exploratory programs in 7th grade; in 2013-2014, Life Skills (8th Exploratory) joined the Physical Education rotation for two reasons: (1) to provide better curricular alignment with Physical Education and Health; (2) to address class size concerns in PE and Health - where some classes were at or above 31-32 students, creating supervision and safety concerns. This means that starting in 13-14, there are now 4 Exploratories in 8th grade (also increasing the number of class meetings each Exploratory has with students)

**Notes:**

# Acton Elementary Class Size and Space Planning 2013-2014

Excerpt of SC Presentation from  
May 2013; Updated July 2014

Marie Altieri

7/18/2014

1

## 2013-2014 K as it moves to 6<sup>th</sup> Grade

	Students	Sections	Class Size	Range
K	287	14	20.5	19-21
1	305	14	21.8	21-22
2	316	14	22.6	22-23
3	322	14	23	22-24
4	326	14	23.3	22-24
5	330	14	23.6	23-24
6	334	14	23.9	23-25

7/18/2014

2

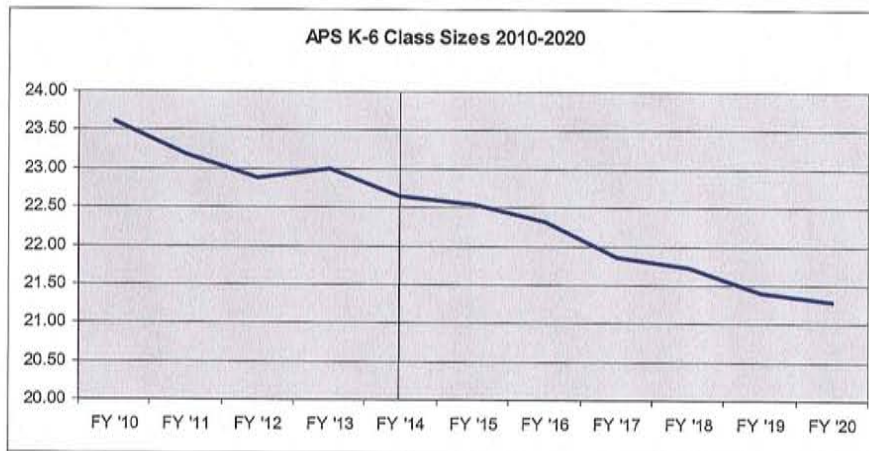
## Class Sizes K-6 2013-2014 (June 1, 2014)

	Students	Sections	Class Size	Range
K	287	14	20.5	19-21
1	311	14	22.2	21-23
2	321	15	21.4	21-22
3	373	16	23.3	23-24
4	380	16	23.75	23-24
5	364	15	24.3	24-25
6	359	15	24	24

7/18/2014

3

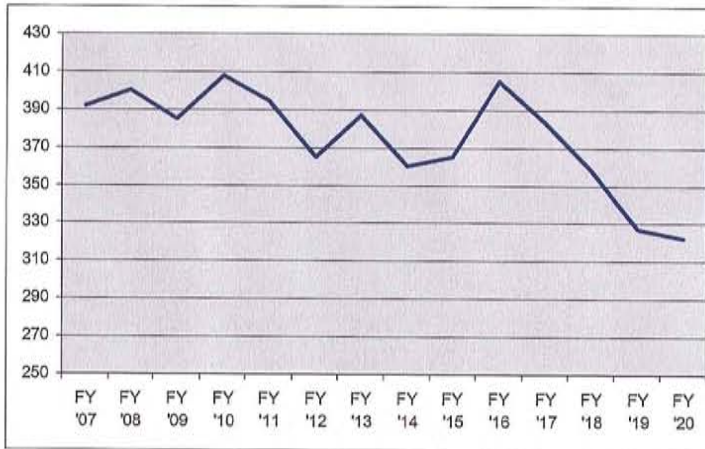
## K-6 Class Sizes 2010 - 2020



7/18/2014

4

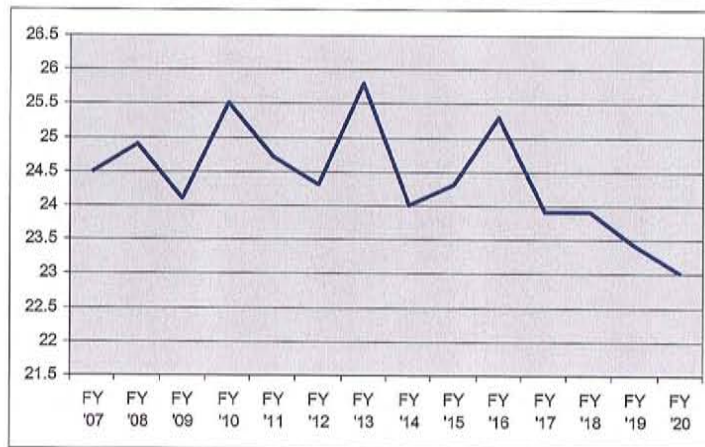
## 6<sup>th</sup> Grade Enrollment



7/18/2014

5

## 6<sup>th</sup> Grade Class Size



7/18/2014

6

## Total Sections K-6

2010-2011	108
2011-2012	107
2012-2013	106
2013-2014	105
2014-2015	104
2015-2016	103
2016-2017	100
2017-2018	96
2018-2019	95

7/18/2014

7

## Classroom Reductions = Space

- Goal to provide two classrooms for each school over time.
- As of September, Gates will have completed two years of two sections which will move through the school.
- Will rotate through the other schools

7/18/2014

8



## Space Priorities

---

- ❑ Art and Music move into classrooms
  
- ❑ Programs Currently in Modulars
  - Douglas: Art, Music, Library, SpEd, All Day K
  - Conant: Art, Tech Lab, Speech, Reading
  - Admin: CASE Colebrook HS – 4 Classrooms
  - Facilities Administration
  - Total: 10 – 14 Classrooms in Modulars
  
- ❑ All Day K

7/18/2014

9

## Space Priorities (continued)

---

- ❑ Special Education
  - Douglas and Gates have K-3 program and do not have room for 4-6 continuum
  
- ❑ Preschool currently uses 4-5 classrooms at Admin
  
- ❑ Small Group Services
  - Speech, Reading, OT, PT, etc.
  - Often in hallways, cafeterias
  
- ❑ Extended Day

7/18/2014

10



Actual  
Acton Public Schools  
2013-2014  
October 1, 2013

Grade YOG	Conant				Douglas				Gates				McCarthy-Towne				Merriam				Total	# Sec.	Avg. Size		
Rm	CAD	CAM	CPM	2#	DAD1	DAD2	DAM	3#	GAD	GAM	1#	Case +	TAD1	TAD2	TAM	[1]3#	MAD	MAM	MPM	1#	7#				
K-26	20	21	21	62	20	21	20	61	21	20	41		21	21	21	63	20	20	21	61	288	14	20.6		
Rm	3	4	5	1#	3	4	5	2#	3	5			310	311	312	[1]2#	333	231	334	1#	6#				
Gr. 1-25	21	22	22	65	22	22	23	67	22	22	44		22	22	23	67	22	22	21	65	308	14	22.0		
Rm	6	7	8		6	7	8		6	8	10	3#	301	302	303	[1]1#	224	234	323	2#	6#				
Gr. 2-24	22	21	20	63	22	20	22	64	21	21	21	63		23	21	22	66	22	22	22	66	322	15	21.5	
Rm	9	10	20		9	10	11		17	7	9	3#	313	314	315	[4]2#	230	324	330	331	4#	9#			
Gr. 3-23	24	24	23	71	23	24	23	70	23	23	24	70		24	24	23	71	23	23	24	22	92	374	16	23.4
Rm	17	18	19	1#	12	13	14	2#	18	19	20	1#	213	214	215	[3]3#	233	321	322	332		7#			
Gr. 4-22	24	24	24	72	25	24	23	72	25	23	24	72		23	23	24	70	24	24	24	24	96	382	16	23.9
Rm	14	15	16		19	20	21		13	15	16	1#	210	211	212	[3]	135	232	333	1#	2#				
Gr. 5-21	24	24	24	72	23	25	25	73	23	24	24	71		24	24	24	72	23	23	23	69	357	15	23.8	
Rm	11	12	13		15	16	17		11	12	14		113	114	115	1#	223	235	335	1#	2#				
Gr. 6-20	23	24	24	71	24	23	24	71	24	24	24	72		24	24	25	73	25	24	24	73	360	15	24.0	
Total Staff				4#				4#				9#				12#					10#	39#			
												Case+	[13]	Average	23.8	499									
Total	21 Sec.	Average	22.7	476	21 Sec.	Average	22.8	478	19 Sec.	Average	22.8	433	21 Sec.	Average	23.0	482	23 Sec.	Average	22.7	522	2391	105	22.8		
Range	20	24			20	25			20	25			21	25				20	25			20	25		

ALL DAY K - CAD, DAD1, DAD2, GAD, TAD1, TAD2, and MAD

# Staff Children  
Case [ ]  
CAD, DAD, DBD, GAD, TAD, and MAD  
- ALL DAY PROGRAMS

Actual  
Boxborough Public Schools  
2013 - 2014  
October 1, 2013

10/8/2013  
12:12 PM

Grade YOG	Blanchard				Total	Total BPS	Choice Munc Agrmt	#Sec.	Avg. Size	Total APS	Staff/Munc Agrmt	#Sec.	Avg. Size	APS & BPS Combined	Total Choice/Staff	#Sec.	Avg. Size		
Rm			276	218															
<b>K-26</b>			<b>19</b>	<b>20</b>	<b>39</b>	<b>39</b>	4	2	19.5	<b>288</b>	7	14	20.6	<b>327</b>	11	16	20.4		
Rm	211	213	215																
<b>Gr. 1-25</b>			<b>18</b>	<b>16</b>	<b>17</b>	<b>51</b>	<b>51</b>	8	3	17.0	<b>308</b>	6	14	22.0	<b>359</b>	14	17	21.1	
Rm	219	221	227																
<b>Gr. 2-24</b>			<b>20</b>	<b>20</b>	<b>20</b>	<b>60</b>	<b>60</b>	7	3	20.0	<b>322</b>	6	15	21.5	<b>382</b>	13	18	21.2	
Rm	226	229	231																
<b>Gr. 3-23</b>			<b>19</b>	<b>20</b>	<b>20</b>	<b>59</b>	<b>59</b>	4	3	19.7	<b>374</b>	9	16	23.4	<b>433</b>	13	19	22.8	
Rm	243	245	247																
<b>Gr. 4-22</b>			<b>19</b>	<b>19</b>	<b>19</b>	<b>57</b>	<b>57</b>	0	3	19.0	<b>382</b>	7	16	23.9	<b>439</b>	7	19	23.1	
Rm	118	128	130																
<b>Gr. 5-21</b>			<b>24</b>	<b>24</b>	<b>23</b>	<b>71</b>	<b>71</b>	2	3	23.7	<b>357</b>	2	15	23.8	<b>428</b>	4	18	23.8	
Rm	108	110	112	114															
<b>Gr. 6-20</b>			<b>17</b>	<b>17</b>	<b>17</b>	<b>18</b>	<b>69</b>	<b>69</b>	5	4	17.3	<b>360</b>	2	15	24.0	<b>429</b>	7	19	22.6
					3#														
<b>Total</b>	21 Sec Average 19.3				<b>406</b>	<b>406</b>	30	21	19.3	<b>2391</b>	39	105	22.7	<b>2797</b>	69	126	22.1		
Range	16	24						16	24	Range	20	25	39			0	69		

Grade level totals correct  
Distribution by Room not complete

**October 1, 2013**  
**Column C Breakdown**

<i>Grade</i>	<i>Staff Free</i>	<i>Choice</i>	<i>Tuition In</i>	<i>Sped Tuition</i>	<i>Municipal Agreement</i>	<i>Total</i>
K	7	0	0	0	0	7
1	6	0	0	0	0	6
2	6	0	0	0	0	6
3	8	0	0	0	1	9
4	7	0	0	0	0	7
5	2	0	0	0	0	2
6	2	0	0	0	0	2
<i>APS Total</i>	38	0	0	0	0	38
<i>Out District</i>	0	0	0	0	0	0
<i>Total</i>	38	0	0	0	1	39
7	0	7	0	0	0	7
8	0	9	0	0	0	9
<i>Sub Total</i>	0	16	0	0	0	16
9	0	8	0	1	0	9
10	0	9	0	0	0	9
11	0	8	0	0	0	8
12	0	6	0	0	0	6
UG	0	0	0	0	0	0
<i>Sub Total</i>	0	31	0	1	0	32
<i>Out District</i>	0	0	0	1	0	1
<i>Region Total</i>	0	47	0	2	0	49
<i>Grand Total</i>	38	47	0	2	1	88

# Acton-Boxborough Regional School District

October 1, 2013

Grade	Acton	Boxborough	*Non-Residents	Total
7	389	72	7	468
8	376	78	9	463
9	394	72	9	475
10	404	73	9	486
11	393	81	8	482
12	405	106	6	517
Ungraded	0	0	0	0
Post-Grads	0	0	0	0
Sped Out of District	43	8	1	52
Other	0	0	0	0
Total	2404	490	49	2943
Acton Enrollment	2404			
Boxborough Enrollment	490			
Total Acton /Boxborough	2894			
Acton %	83.07%			
Boxborough %	16.93%			
Total Percentage	100.00%			

\*Non-Residents include: Choice, Staff Children and Sped Tuition-in

# Acton Public School and Blanchard School K-6

October 1, 2013

Grade	Acton	*Non - Residents	Acton	Boxborough	*Non - Residents	Boxborough
		Acton	SchoolsTotal		Boxborough	SchoolsTotal
K	281	7	288	35	4	39
1	302	6	308	43	8	51
2	316	6	322	53	7	60
3	365	9	374	55	4	59
4	375	7	382	57	0	57
5	355	2	357	69	2	71
6	358	2	360	64	5	69
Ungraded	0	0	0	0	0	0
Post-Grads	0	0	0	0	0	0
Sped Out of District	24	0	24	7	0	7
Other	0	0	0	0	0	0
<b>Total</b>	<b>2376</b>	<b>39</b>	<b>2415</b>	<b>383</b>	<b>30</b>	<b>413</b>
Acton Enrollment	2376					
Boxborough Enrollment	383					
Total Acton /Boxborough	2759					
Acton %	86.12%					
Boxborough %	13.88%					
Total Percentage	100.00%					
Acton Preschool		41				
Boxborough Preschool		7				

Acton Non-Resident Staff (38) and Municipal Agreement (1)  
 Boxborough Non-Residents include Staff Children (2), School Choice (27) and Municipal Agreement (1)

## *Three Year Comparison K through 12*

Year -->	2011	2012	2013	<i>Total of 3 Yrs</i>	<i>Avg. of 3 Yrs</i>
Acton Enrollment	4817	4833	4780	14430	4810.00
Boxborough Enrollment	968	913	873	2754	918.00
Total	5785	5746	5653	17184	5728.00
Acton %	83.27%	84.11%	84.56%	83.97%	83.97%
Boxborough %	16.73%	15.89%	15.44%	16.03%	16.03%
Total	100.00%	100.00%	100.00%	100.00%	100.00%



*Three Year Comparison  
7 through 12*

Year -->	2011	2012	2013	Total of 3 Yrs	Avg. of 3 Yrs
Acton Enrollment	2391	2414	2404	7209	2403.00
Boxborough Enrollment	536	507	490	1533	511.00
Total	2927	2921	2894	8742	2914.00
Acton %	81.69%	82.64%	83.07%	82.46%	82.46%
Boxborough %	18.31%	17.36%	16.93%	17.54%	17.54%
Total	100.00%	100.00%	100.00%	100.00%	100.00%

**October 1, 2013**  
**Comparison of Enrollment Projections**

	<b>ALL STUDENTS*</b>	<b>ASHTON'S</b>	<b>NESDEC</b>	<b>ONLY A &amp; A/B</b>
<i>Levels</i>	<i>Actual</i>	<i>Projection</i>	<i>Projection</i>	<i>APS &amp; A/B ACTUAL</i>
K	288	261	269	281
1	308	286	280	302
2	322	325	322	316
3	374	361	359	365
4	382	387	390	375
5	357	358	355	355
6	360	358	359	358
<b>A.P.S. Total</b>	<b>2391</b>	<b>2336</b>	<b>2334</b>	<b>2352</b>
7	468	456	454	461
8	463	457	458	454
<b>J.H.S. Total</b>	<b>931</b>	<b>913</b>	<b>912</b>	<b>915</b>
9	475	467	466	466
10	486	481	482	477
11	482	462	464	474
12	517	520	519	511
<b>H.S. Total</b>	<b>1960</b>	<b>1930</b>	<b>1931</b>	<b>1928</b>
<b>Reg. Total</b>	<b>2891</b>	<b>2843</b>	<b>2843</b>	<b>2843</b>
<b>Grand Total</b>	<b>5282</b>	<b>5179</b>	<b>5177</b>	<b>5195</b>

\*Includes Choice, staff students and tuitioned in students

## Count Comparison 2011-2013

Levels	Oct. 1, 2011				Oct. 1, 2012				Oct. 1, 2013				Difference Oct 1, 2013 (-) Oct 1, 2012			
	A	B(1)	C	Tot	A	B(1)	C	Tot	A	B(1)	C	Tot	A	B(1)	C	Total
	K	294	59	7	301	267	43	6	273	281	39	7	288	14	-4	1
1	333	53	8	341	312	59	8	320	302	51	6	308	-10	-8	-2	-12
2	354	54	7	361	348	54	8	356	316	60	6	322	-32	-6	-2	-34
3	351	68	2	353	382	53	8	390	365	59	9	374	-17	-6	1	-16
4	351	66	2	353	354	65	2	356	375	57	7	382	21	-8	5	26
5	369	75	5	374	354	70	2	356	355	71	2	357	1	1	0	1
6	361	84	4	365	382	75	5	387	358	69	2	360	-24	-6	-3	-27
<i>K-6 Ungr.</i>	0	0	0	0	0	0	0	0	0	22	0	0	0	22	0	0
<i>In D.Pre-sch.</i>	38	8	0	38	37	5	0	37	41	0	0	41	4	-5	0	4
<i>In D Pre-sch Itnt</i>	0	0	0	0	0	0	0	0	8	2	0	8	8	2	0	8
<i>O.D. Pre-sch.</i>	2	3	0	2	3	2	0	3	0	2	0	0	-3	0	0	-3
<i>O.D. SPED K-6</i>	13	4	0	13	20	7	0	20	24	7	0	24	4	0	0	4
<b><i>A.P.S. Total</i></b>	<b>2466</b>	<b>474</b>	<b>35</b>	<b>2501</b>	<b>2459</b>	<b>433</b>	<b>39</b>	<b>2498</b>	<b>2425</b>	<b>439</b>	<b>39</b>	<b>2464</b>	<b>-34</b>	<b>-6</b>	<b>0</b>	<b>-34</b>
7	391	71	7	469	375	74	11	460	389	72	7	468	14	-2	-4	8
8	408	71	9	488	396	72	7	475	376	78	9	463	-20	6	2	-12
<b><i>J.H.S. Total</i></b>	<b>799</b>	<b>142</b>	<b>16</b>	<b>957</b>	<b>771</b>	<b>146</b>	<b>18</b>	<b>935</b>	<b>765</b>	<b>150</b>	<b>16</b>	<b>931</b>	<b>-6</b>	<b>4</b>	<b>-2</b>	<b>-4</b>
9	385	78	8	471	408	71	12	491	394	72	9	475	-14	1	-3	-16
10	415	109	3	527	392	74	7	473	404	73	9	486	12	-1	2	13
11	387	99	7	493	419	107	4	530	393	81	8	482	-26	-26	4	-48
12	361	96	7	464	379	100	7	486	405	106	6	517	26	6	-1	31
<i>9-12 Ungr.</i>	0	0	0	0	0	0	0	0	0	0	0	0	0	0	0	0
<i>P.G.</i>	0	0	0	0	0	0	0	0	0	0	0	0	0	0	0	0
<b><i>H.S. Total</i></b>	<b>1548</b>	<b>382</b>	<b>25</b>	<b>1955</b>	<b>1598</b>	<b>352</b>	<b>30</b>	<b>1980</b>	<b>1596</b>	<b>332</b>	<b>32</b>	<b>1960</b>	<b>-2</b>	<b>-20</b>	<b>2</b>	<b>-20</b>
<b><i>Total JHS &amp; HS</i></b>	<b>2347</b>	<b>524</b>	<b>41</b>	<b>2912</b>	<b>2369</b>	<b>498</b>	<b>48</b>	<b>2915</b>	<b>2361</b>	<b>482</b>	<b>48</b>	<b>2891</b>	<b>-8</b>	<b>-16</b>	<b>0</b>	<b>-24</b>
<i>O.D. SPED 7-12</i>	44	12	0	56	45	9	0	54	43	8	1	52	-2	-1	1	-2
<b><i>Reg. Total</i></b>	<b>2391</b>	<b>536</b>	<b>41</b>	<b>2968</b>	<b>2414</b>	<b>507</b>	<b>48</b>	<b>2969</b>	<b>2404</b>	<b>490</b>	<b>49</b>	<b>2943</b>	<b>-10</b>	<b>-17</b>	<b>1</b>	<b>-26</b>
<b><i>A.P.S. Total</i></b>	<b>2466</b>	<b>474</b>	<b>35</b>	<b>2501</b>	<b>2459</b>	<b>433</b>	<b>39</b>	<b>2498</b>	<b>2425</b>	<b>439</b>	<b>39</b>	<b>2464</b>	<b>-34</b>	<b>-6</b>	<b>0</b>	<b>-34</b>
<b><i>Reg. Total</i></b>	<b>2391</b>	<b>536</b>	<b>41</b>	<b>2968</b>	<b>2414</b>	<b>507</b>	<b>48</b>	<b>2969</b>	<b>2404</b>	<b>490</b>	<b>49</b>	<b>2943</b>	<b>-10</b>	<b>-17</b>	<b>1</b>	<b>-26</b>
<b><i>Grand Total</i></b>	<b>4857</b>	<b>536</b>	<b>76</b>	<b>5469</b>	<b>4873</b>	<b>940</b>	<b>87</b>	<b>5467</b>	<b>4829</b>	<b>929</b>	<b>88</b>	<b>5407</b>	<b>-44</b>	<b>-11</b>	<b>1</b>	<b>-60</b>

## Enrollment by Race October 1, 2013

	Low Income	Asian/Pacific Islander	African- American	Caucasian	Hispanic	American Indian	Minority	Percent Minority	Percent Asian	Total
School										
Conant	20	290	6	171	9	0	305	64.08%	60.92%	476
Douglas	33	144	7	317	8	2	161	33.68%	30.13%	478
Gates	28	173	13	238	6	3	195	45.03%	39.95%	433
McCarthy-Towne	36	89	15	346	27	5	136	28.22%	18.46%	482
Merriam	23	128	13	366	15	0	156	29.89%	24.52%	522
Total	140	824	54	1438	58	10	946	39.57%	34.46%	2391
% of Total APS	5.86%	34.46%	2.26%	60.14%	2.43%	0.42%	39.57%			
JHS	44	288	15	609	18	1	322	34.59%	30.93%	931
SHS	84	492	31	1377	57	3	583	29.74%	25.10%	1960
Total	128	780	46	1986	75	4	905	31.30%	26.98%	2891
% of Total A/B	4.43%	26.98%	1.59%	68.70%	2.59%	0.14%	31.30%			
Grand Total	268	1604	100	3424	133	14	1851	35.04%	30.37%	5282
% of Grand Total	5.07%	30.37%	1.89%	64.82%	2.52%	0.27%	35.04%			
Blanchard	12	131	10	253	6	6	153	37.68%	32.27%	406

Minuteman School of Applied Arts and Sciences  
 October 1, 2013

GRADE	10/96	10/97	10/98	10/99	10/00	10/01	10/02	10/03	10/04	10/05	10/06	10/07	10/08	10/09	10/10	10/11	10/12	10/13
9	4	7	7	8	12	8	9	12	6	11	3	8	7	2	7	10	3	6
10	4	4	11	8	10	8	6	11	11	8	11	4	6	9	2	7	10	2
11	4	3	3	7	11	9	6	7	9	9	10	10	2	7	9	1	5	10
12	2	3	2	3	8	8	13	6	6	9	9	9	9	1	5	7	0	7
PG ACTON	7	7	4	7	6	9	4	2	2	0	4	1	4	3	0	0	0	0
TOTAL	21	24	27	33	47	42	38	38	34	37	37	32	28	22	23	25	18	25
9	1	3	2	1	2	3	1	5	4	2	3	2	6	1	2	0	3	0
10	0	1	2	2	1	4	2	2	6	4	2	3	2	7	1	1	0	3
11	2	0	1	2	1	1	2	2	1	4	4	2	3	2	7	1	1	0
12	2	2	0	0	2	2	1	2	2	1	3	4	2	4	2	5	1	1
PG BOXBOROUGH	1	3	0	3	0	0	2	3	1	3	0	0	0	0	0	0	0	0
TOTAL	6	9	5	8	6	10	8	14	14	14	12	11	13	14	12	7	5	4
GRAND TOTAL	27	33	32	41	53	52	46	52	48	51	49	43	41	36	35	32	23	29

## Update on School Enrollment Projections 2013

Peter K. Ashton  
Mary Ann Ashton  
Innovation & Information Consultants, Inc.  
Concord, MA

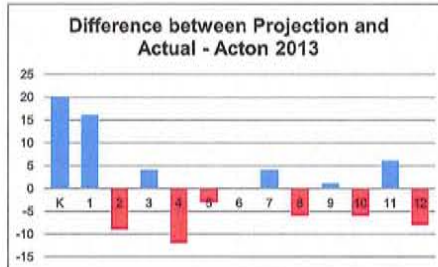
December 5, 2013

### Enrollment Continues to Decline

- Enrollment this year is down in both towns
  - Acton elementary enrollment declined by 47 students (-2%) from last year
  - Boxborough elementary down by 23 students (-6%)
  - At current region, JHS decreased by 2 students and at HS decreased by 22 students
  - Net overall decline in enrollment = (84) (-1.7%)

## Difference between Projection and Actual for 2013

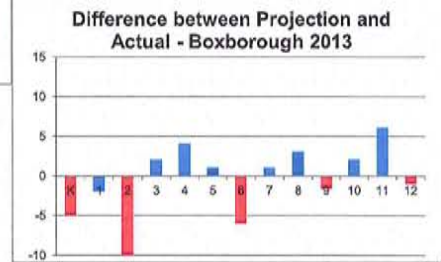
This is where we attempt to show how good we are at predicting the future. Of course this is only one year out, but overall we predicted correctly the total number of kids enrolled in Acton and Boxborough (5,571) – of course there are variations from grade to grade



Blue means we over predicted, red means we under predicted

3

Looking back 7 years we were only off by about 4% in predicting this year's total enrollment.



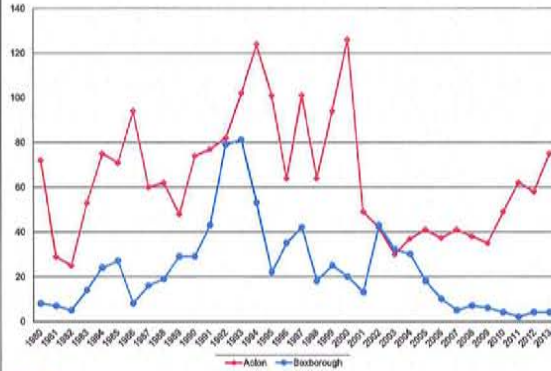
## What is the Cohort Survival Method?

- Computes the ratio of children in one grade compared to the number who “survive” to the next grade
  - Starting point is birth to kindergarten ratio
    - based on relationship between kindergarten enrollments and live births five years earlier
  - Grade progression ratios follow the number of children who advance from one grade to the next
  - Relies on birth data and birth projections
  - Captures effects of net migration, population changes, retention rates, housing trends
    - Assumes history is a reasonable predictor of the future
- Use 5 year average of historical trends

4

## Building Permits by Town

### SF Building Permits:

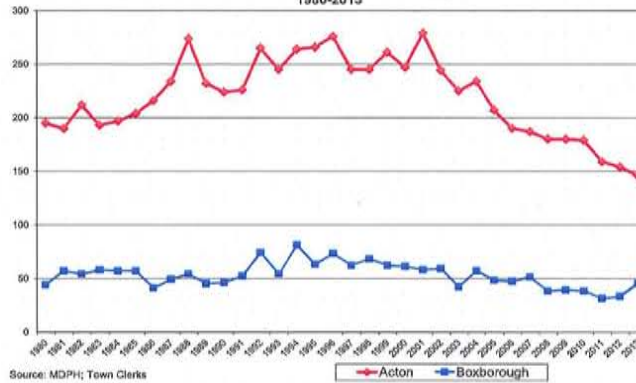


- The number of single family permits in Acton is increasing again after a decade long decline
- Boxborough housing permits have been declining since 2002

5

## Births in Acton and Boxborough

Births in Acton and Boxborough  
1980-2013

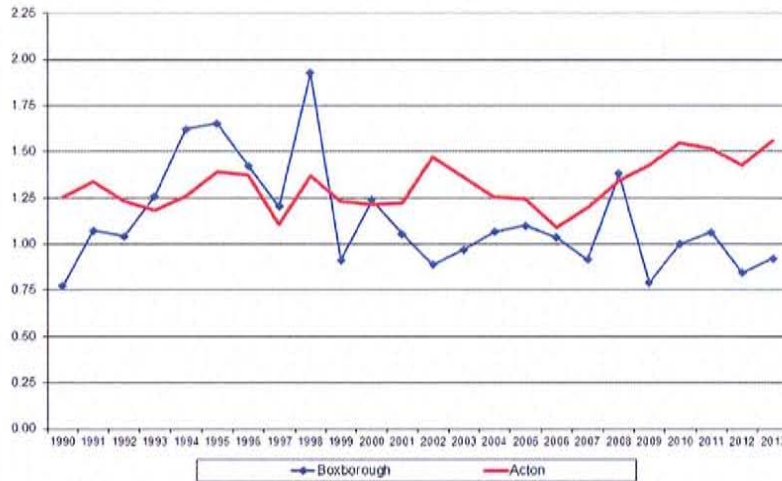


- Acton and Boxborough births declining since 2002; slight increase in Boxborough
- Reflects a state-wide trend

6



## Comparison of Birth to Kindergarten Ratios



7

Most volatile of the predictors of enrollment; spreads out by third grade

## Enrollment Projections

- Projections developed using “standard” model (excludes “choice”)
- Residential development on the wane in both towns
- Turnover has slowed, but picking up as housing market recovers
- Enrollment continues to decline for next 6 years at elementary and for the foreseeable future at grades 7 through 12
- Birth projections have been revised which suggest continued low enrollment in Boxborough
  - Increase doesn't begin until 2019
  - Total region enrollment declines through 2023, then starts upward climb again

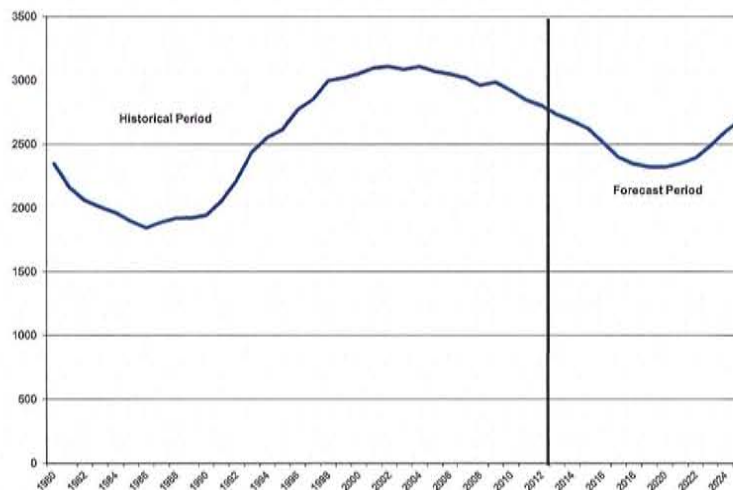
8

## Enrollment Projections

- Decline in births and low new construction lead to decrease in enrollment over the next decade
  - Regional elementary enrollment drops by about 400 students between now and 2020; then increases back almost to today's level by 2025.
  - JHS/SHS both continue to drop; total decline is 700 students between now and 2025.
- Acton's share of total regional enrollment continues to increase until 2021, then Boxborough's share slowly increases but remains at about 15% by 2025

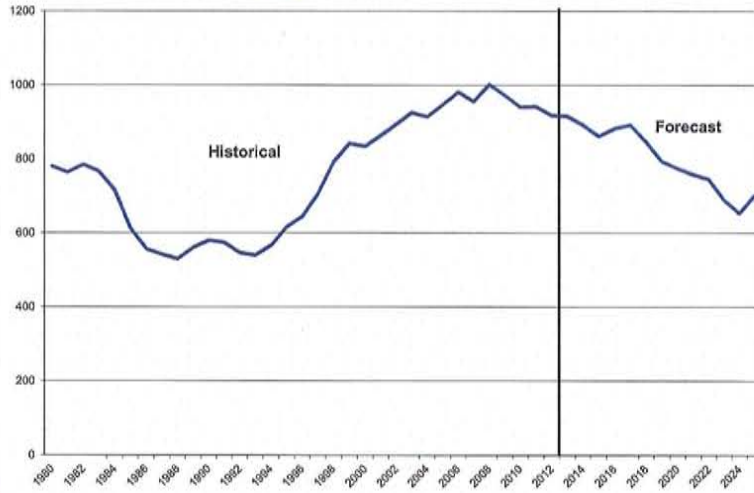
9

## Regional K-6 Enrollment



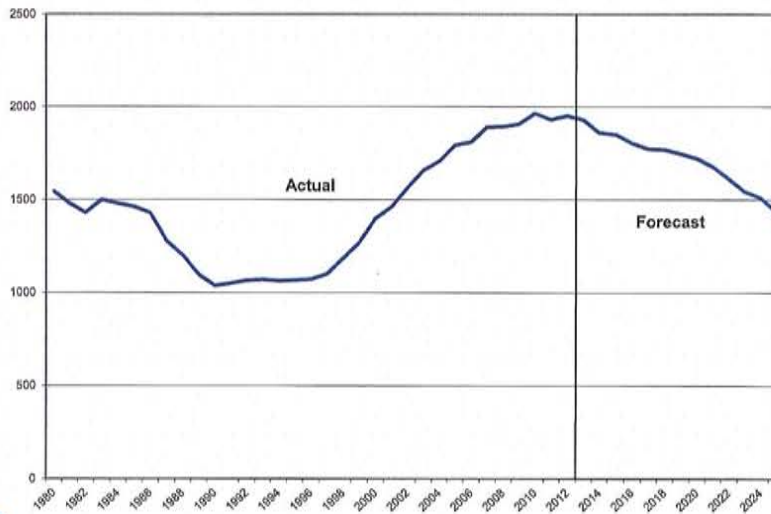
10

## Junior High Enrollment



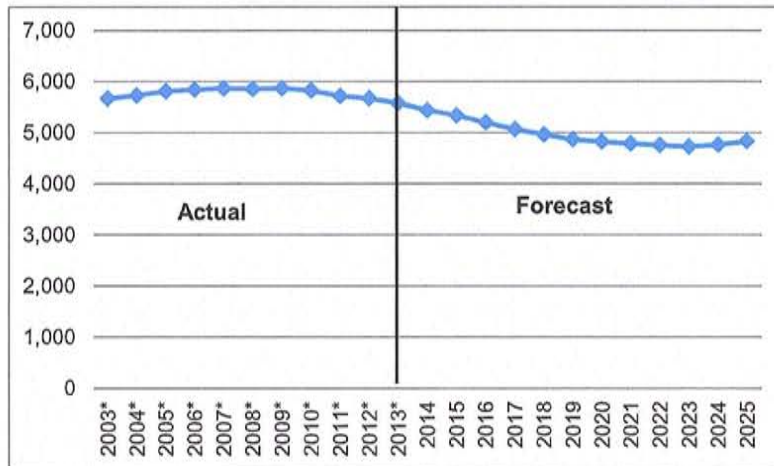
11

## ABRHS Enrollment



12

## Total Regional Enrollment



13

Revised Enrollment Projections - 11/13

PUBLIC SCHOOL ENROLLMENT PROJECTIONS									
Elementary School									
Acton, MA: 2003-2025									
Year	K-12	K	1	2	3	4	5	6	Total
2003*	4,517	334	348	369	360	355	365	349	2,480
2004*	4,575	328	352	363	376	365	361	379	2,524
2005*	4,654	308	352	359	372	380	375	370	2,516
2006*	4,712	305	315	371	375	375	387	390	2,518
2007*	4,762	292	320	340	389	394	382	397	2,514
2008*	4,773	301	326	336	349	381	404	384	2,481
2009*	4,830	334	333	349	358	359	391	407	2,531
2010*	4,815	320	347	342	344	369	360	394	2,476
2011*	4,760	294	333	354	351	361	369	361	2,413
2012*	4,768	267	312	348	382	354	354	382	2,399
2013*	4,713	281	302	316	365	375	355	358	2,352
2014	4,627	269	302	313	329	370	378	360	2,321
2015	4,557	268	290	313	325	334	373	383	2,285
2016	4,451	238	288	300	326	330	336	378	2,195
2017	4,344	230	256	298	312	330	333	341	2,100
2018	4,270	244	248	265	310	316	333	337	2,053
2019	4,191	257	262	256	276	315	319	337	2,022
2020	4,152	271	277	271	267	279	317	323	2,006
2021	4,127	284	291	286	283	271	282	321	2,018
2022	4,086	289	306	301	298	287	273	285	2,039
2023	4,047	293	310	316	314	302	289	276	2,101
2024	4,075	296	315	321	329	318	305	293	2,178
2025	4,112	301	319	326	335	334	321	309	2,243

PUBLIC SCHOOL ENROLLMENT PROJECTIONS			
Junior High School			
Acton, MA: 2003-2025			
Year	7	8	Total
2003*	375	354	729
2004*	351	368	719
2005*	391	351	742
2006*	382	400	782
2007*	395	381	776
2008*	402	407	809
2009*	393	402	795
2010*	395	401	796
2011*	391	408	799
2012*	375	396	771
2013*	389	376	765
2014	361	394	755
2015	363	366	729
2016	386	368	754
2017	381	392	773
2018	344	386	730
2019	340	348	688
2020	340	345	685
2021	326	345	671
2022	324	330	654
2023	279	329	607
2024	295	283	578
2025	311	299	611

PUBLIC SCHOOL ENROLLMENT PROJECTIONS					
High School					
Acton, MA: 2003-2025					
Year	9	10	11	12	Total
2003*	343	328	315	322	1308
2004*	362	338	332	300	1332
2005*	368	361	341	326	1396
2006*	345	364	369	334	1412
2007*	391	345	366	370	1472
2008*	385	394	342	362	1483
2009*	402	382	383	337	1504
2010*	402	390	370	381	1543
2011*	385	415	387	361	1548
2012*	408	392	419	379	1598
2013*	394	404	393	405	1596
2014	372	394	400	385	1551
2015	390	372	390	392	1543
2016	362	380	368	382	1502
2017	363	362	386	361	1472
2018	387	364	358	378	1487
2019	382	387	360	351	1480
2020	344	382	383	353	1462
2021	341	345	378	376	1439
2022	341	341	341	371	1393
2023	327	341	337	334	1339
2024	325	327	337	330	1319
2025	279	325	323	331	1258

Excludes choice  
\* Actual data

Sources: Acton-Boxborough School System  
Acton Town Clerk & Building Commissioner  
Mass. Department of Public Health

NOTE: This scenario is a result of utilizing 5 year average for grade to grade ratios and for kindergarten to birth ratio

Revised Enrollment Projections - 11/13

PUBLIC SCHOOL ENROLLMENT PROJECTIONS									
Elementary School									
Boxborough, MA: 2003-2025									
Year	K-12	K	1	2	3	4	5	6	Total
2003*	1,146	66	68	91	87	86	108	95	601
2004*	1,151	66	70	74	98	79	85	109	581
2005*	1,152	67	74	67	75	96	84	88	551
2006*	1,126	60	67	76	68	76	95	87	529
2007*	1,102	54	70	69	72	68	76	95	504
2008*	1,078	58	57	72	71	70	72	77	477
2009*	1,030	45	59	60	66	74	74	73	451
2010*	1,005	48	54	66	61	68	73	70	440
2011*	952	51	49	53	66	60	72	77	428
2012*	897	43	52	51	53	63	65	72	399
2013*	858	35	43	53	55	57	69	64	376
2014	804	39	37	45	53	56	60	69	359
2015	774	38	41	38	45	54	59	60	336
2016	743	31	40	43	38	46	57	59	314
2017	713	33	33	42	43	39	48	57	295
2018	685	45	35	34	42	44	41	48	289
2019	665	47	47	36	34	42	46	41	294
2020	659	51	49	49	36	35	45	46	311
2021	651	54	54	52	49	37	37	45	327
2022	656	58	57	56	52	50	39	37	348
2023	665	60	61	59	56	53	53	39	381
2024	680	63	63	64	59	57	55	53	414
2025	705	64	66	66	64	60	60	55	436

PUBLIC SCHOOL ENROLLMENT PROJECTIONS			
Junior High School			
Boxborough, MA: 2003-2025			
Year	7	8	Total
2003*	97	99	196
2004*	99	96	195
2005*	103	101	204
2006*	91	108	199
2007*	87	92	179
2008*	99	93	192
2009*	77	100	177
2010*	69	75	144
2011*	71	71	142
2012*	74	72	146
2013*	72	78	150
2014	63	73	136
2015	68	64	132
2016	59	69	128
2017	58	60	118
2018	56	59	115
2019	48	57	105
2020	41	48	89
2021	45	41	87
2022	44	46	90
2023	36	45	81
2024	38	37	75
2025	52	39	91

PUBLIC SCHOOL ENROLLMENT PROJECTIONS					
High School					
Boxborough, MA: 2003-2025					
Year	9	10	11	12	Total
2003*	97	100	74	78	349
2004*	97	102	101	75	375
2005*	103	91	101	102	397
2006*	100	104	96	98	398
2007*	116	100	106	97	419
2008*	87	116	100	106	409
2009*	97	88	116	101	402
2010*	108	101	97	115	421
2011*	78	109	99	96	382
2012*	71	74	107	100	352
2013*	72	73	81	106	332
2014	81	73	75	81	309
2015	76	81	75	75	307
2016	66	76	84	75	301
2017	71	67	79	84	300
2018	62	72	69	78	281
2019	61	63	74	69	266
2020	59	61	65	74	259
2021	50	59	63	65	237
2022	43	50	61	63	218
2023	48	43	52	61	204
2024	46	48	44	52	190
2025	38	47	49	44	178

Excludes choice

\* Actual data

NOTE: This scenario is a result of utilizing 5 year average for grade to grade ratios and 6 yr ratio for kindergarten to birth ratio

Sources: Acton-Boxborough School System  
 Boxborough Town Clerk  
 Mass, Department of Public Health

**Regional Enrollment Acton/Boxborough  
Elementary Schools**

Year	K-12 total	K	1	2	3	4	5	6	Total	Boxborough Share of K-6	Boxborough Share of Total Region
2003*	5663	400	416	460	447	441	473	444	3081		
2004*	5726	394	422	437	474	444	446	488	3105		
2005*	5806	375	426	426	447	476	459	458	3067		
2006*	5838	365	382	447	443	451	482	477	3047		
2007*	5864	346	390	409	461	462	458	492	3018		
2008*	5851	359	383	408	420	451	476	461	2958		
2009*	5860	379	392	409	424	433	465	480	2982		
2010*	5820	368	401	408	405	437	433	464	2916	15.09%	17.27%
2011*	5712	345	382	407	417	411	441	438	2841	15.07%	16.67%
2012*	5665	310	364	399	435	417	419	454	2798	14.26%	15.83%
2013*	5571	316	345	369	420	432	424	422	2728	13.78%	15.40%
2014	5431	308	339	357	382	426	438	429	2680	13.39%	14.81%
2015	5332	306	331	351	370	388	432	443	2621	12.81%	14.52%
2016	5194	269	328	342	364	376	393	437	2509	12.51%	14.30%
2017	5057	263	288	340	355	369	381	398	2394	12.30%	14.10%
2018	4955	289	282	299	352	360	374	385	2341	12.32%	13.82%
2019	4856	304	310	293	310	357	365	379	2317	12.70%	13.70%
2020	4812	322	326	321	303	314	362	369	2317	13.44%	13.70%
2021	4778	338	345	338	332	308	318	366	2345	13.94%	13.62%
2022	4742	347	362	357	350	337	312	322	2387	14.58%	13.83%
2023	4712	353	371	376	370	355	342	315	2482	15.34%	14.11%
2024	4754	359	378	385	389	375	360	346	2592	15.99%	14.29%
2025	4817	365	385	392	398	394	381	364	2679	16.26%	14.63%

JH & HS Regional Enrollment						
Year	JHS	JHS	SHS	SHS	Region	Boxborough
	Boxborough	Combined	Boxborough	Combined	Total	Share
2003*	196	925	349	1657	2582	21.1%
2004*	195	914	375	1707	2621	21.7%
2005*	204	946	397	1793	2739	21.9%
2006*	199	981	398	1810	2791	21.4%
2007*	179	955	419	1891	2846	21.0%
2008*	192	1001	409	1892	2893	20.8%
2009*	177	972	402	1906	2878	20.1%
2010*	144	940	421	1964	2904	19.5%
2011*	142	941	382	1930	2871	18.3%
2012*	146	917	352	1950	2867	17.4%
2013*	150	915	332	1928	2843	17.0%
2014	136	892	309	1860	2752	16.2%
2015	132	861	307	1850	2711	16.2%
2016	128	882	301	1803	2685	16.0%
2017	118	891	300	1772	2663	15.7%
2018	115	845	281	1768	2613	15.2%
2019	105	793	266	1746	2539	14.6%
2020	89	774	259	1721	2495	13.9%
2021	87	757	237	1676	2433	13.3%
2022	90	745	218	1611	2355	13.1%
2023	81	688	204	1542	2230	12.7%
2024	75	653	190	1510	2162	12.3%
2025	91	702	178	1436	2138	12.6%